



CIP of Southwest
Florida
March 11, 2022



Today's Presentation

- Background on the Lee County MPO
- Existing Conditions and Future Projections Impacting Infrastructure Needs
- Overview of Existing and Planned Projects
- Transportation Funding and Project Development
- Challenges



What is the Lee County MPO?

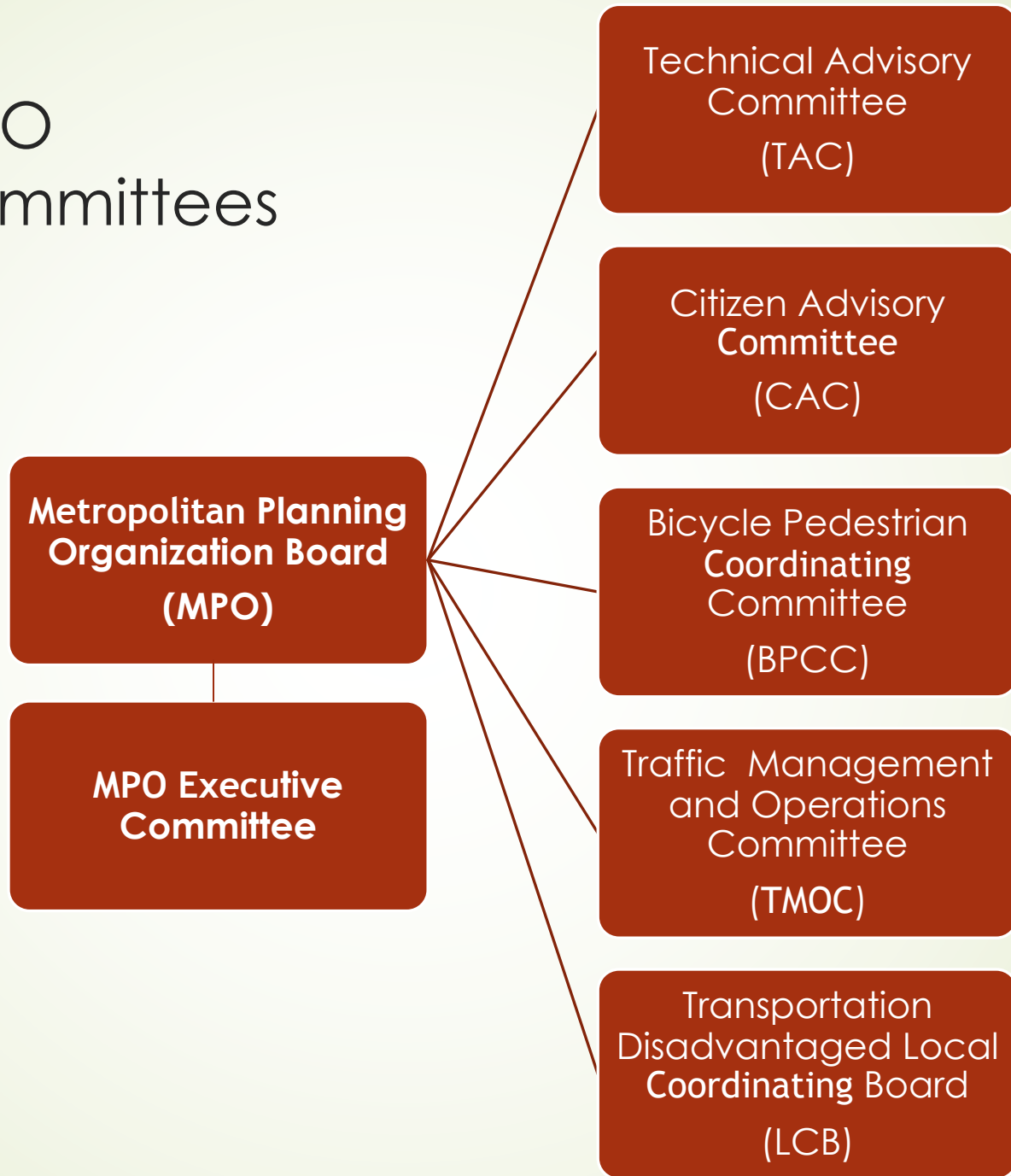
- Formed in 1977 based on the Federal Aid Highway Act of 1962 required each urbanized area with a population of 50,000 or more to establish as a condition of receiving federal funds
- Transportation Policy Making Board
- Board includes elected representatives (18) from City of Bonita Springs (2), City of Cape Coral (5), City of Fort Myers (3), Town of Fort Myers Beach (1), City of Sanibel (1), Village of Estero (1) and Lee County Commissioners (5)
- Based on State and Federal laws, the MPO is responsible for establishing a continuing, cooperative and comprehensive transportation planning process for Lee County
- Provide local elected officials input into the planning and implementation of federal and state transportation funds



Major Responsibilities

- The Long Range Transportation Plan (LRTP) Every Five Years
- The Federal and State Funded Project Priorities Each Year
- The Five Year Transportation Improvement Program (TIP) Each Year in June

MPO Committees



Existing and Future Conditions

The slide features a light green background with a dark green vertical bar on the left. On the right side, there are several decorative green lines: a thin vertical line, a thin curved line starting from the top right and curving towards the center, and two thicker curved lines that sweep across the bottom right corner.

Regional Population Projections

Lee County

2021 = 782,579

2045 = 1,155,012

Collier County

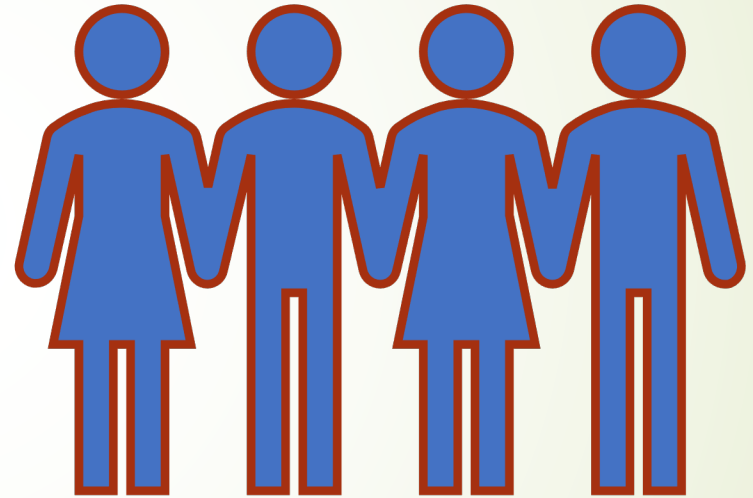
2021 = 382,600

2045 = 519,000

Charlotte County

2021 = 190,570

2045 = 260,500



2021 Population Estimates from BEBR and 2045 projections are from MPO's LRTP's



Dwelling Units and Employee Projections

► **2015 Dwelling Units**

Lee – 374,258

Collier – 217,769

Charlotte – 97,813

► **2045 Dwelling Units**

Lee – 548,543

Collier – 281,759

Charlotte - 153,144

► **2015 Employees**

Lee – 259,569

Collier – 143,044

Charlotte – 48,959

► **2045 Employees**

Lee – 435,910

Collier – 212,780

Charlotte – 77,051

Travel Stats

- ▶ Review of current I-75 daily continuous count data in the area indicates about a 6-8% increase in traffic over historical counts
- ▶ Average commute time in Lee County is 27.5 min. (US average 27.6 min) – 80% drive alone
- ▶ In 2019 VMT in Lee County increased 2.0%, up 25% over last ten years
- ▶ Daily truck miles traveled in Lee County on the SHS up about 6.5% per year from 2015 to 2018
- ▶ In 2021, Florida hosted 122.4 million visitors (131.4 million in 2019), in 2020 Lee County 3.4 million visitors (4.9 million in 2019)
- ▶ RSW served 10.3 million passengers in 2021, up 1% over previous high in 2019

Lee County Freight

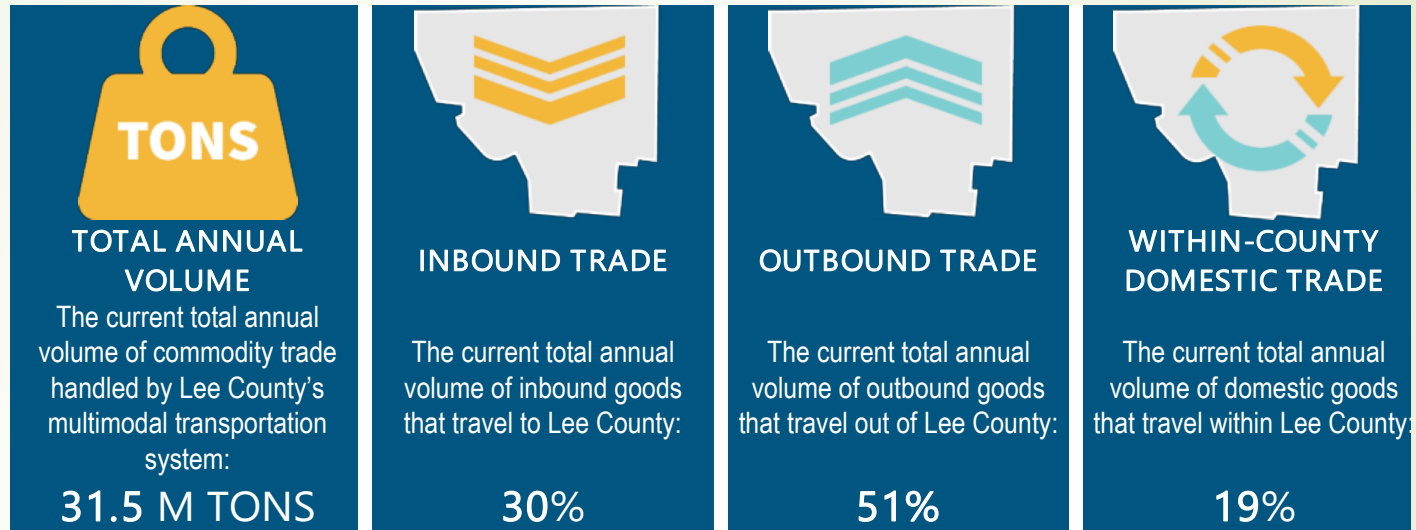


Table 8-2 | Import, Export, and Within Trade Shares by Value – Lee County

Type	2018 Trade Share (USD)	2030 Trade Share (USD)	2045 Trade Share (USD)
Inbound	73%	74%	74%
Outbound	22%	21%	20%
Within	5%	5%	6%

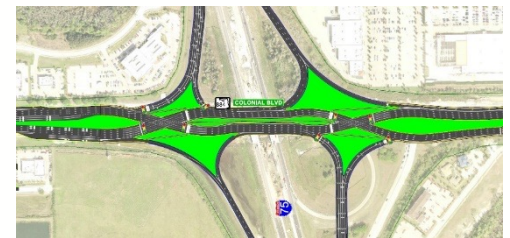
Source: FDOT TRANSEARCH, 2018
US Dollars (USD)



Existing and Planned Projects

Existing Roadway Construction Projects

- I-75 at Colonial – CFI/DDI/Super Street completion mid 2024
- US 41 Winkler to SR 82 utilities/signals/lighting/resurfacing completion mid-year 2023
- Corkscrew Road from Ben Hill to Bella Terra – 2 to 4/6 lanes completion Fall of 2023
- Burnt Store Rd from Pine Island to Tropicana – 2 to 4 lanes completion late Fall of 2022



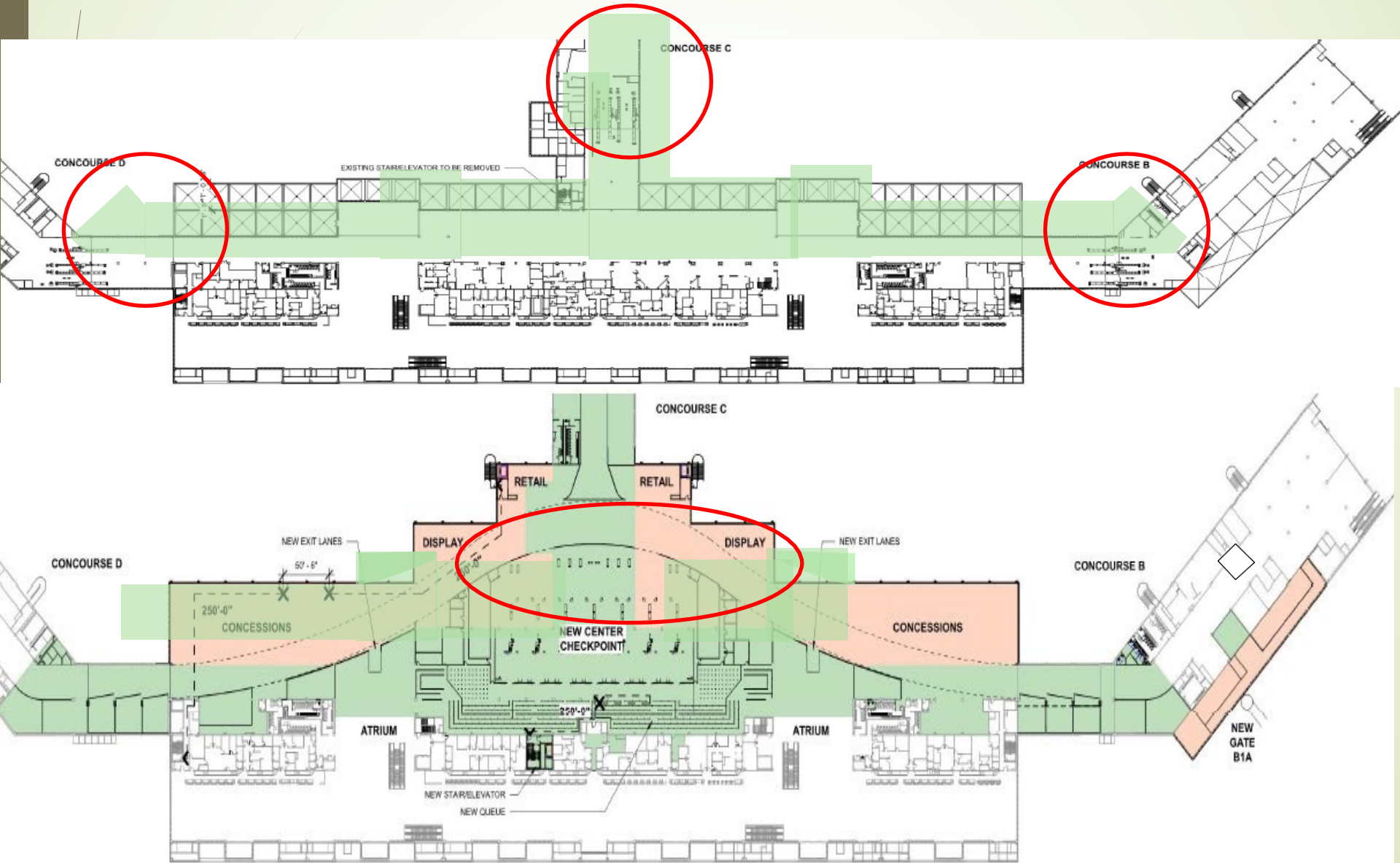
Projects Next Five Years

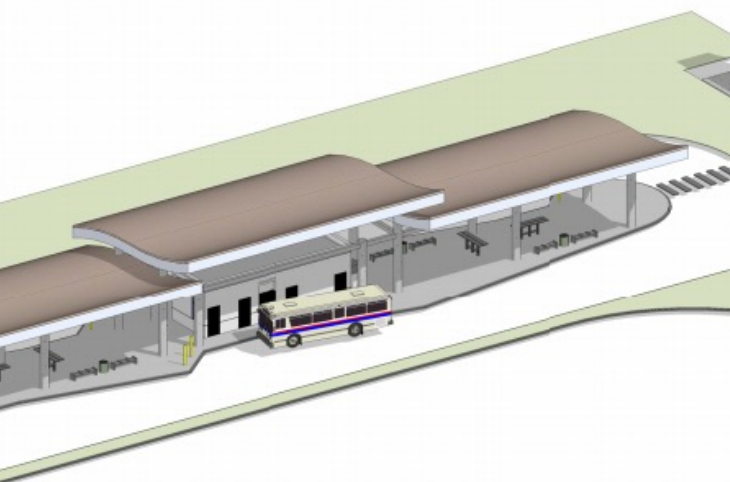
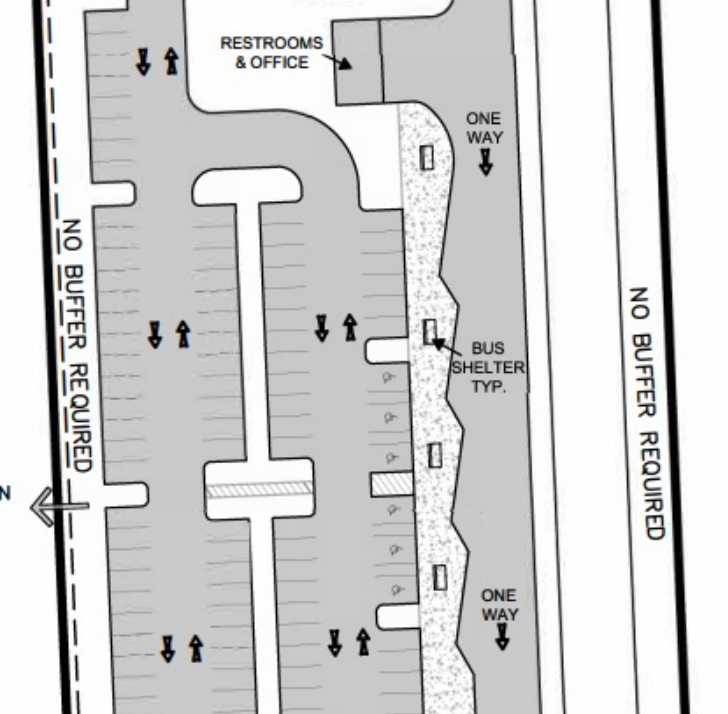
- ▶ I-75 at Daniels Parkway - Interchange Improvements
- ▶ SR 31 from SR 78 to Cook Brown Road – 2 to 4 lanes
- ▶ Big Carlos Bridge – bridge replacement
- ▶ Ortiz Avenue from Colonial to Dr. Martin Luther King – 2 to 4 lanes
- ▶ Three Oaks Ext. from N. of Alico to Daniels – new 4 lanes
- ▶ Corkscrew Road from Bella Terra to Alico – 2 to 4 lanes
- ▶ Edison Ave Ext from Arcadia to Ortiz – new 2 lanes

Projects in 6 to 10 Years

- ▶ Cape Coral, New Pass, Little Carlos and Big Hickory Bridges - Bridge Replacements
- ▶ Alico Road Connector from Alico to SR 82 at Sunshine – new 4 lanes
- ▶ Ortiz Avenue from Dr. Martin Luther King to Lockett/I-75 – 2 to 4 lanes
- ▶ Metro Parkway from S. of Daniels to Winkler – 4 to 6 lanes/CFI's

Terminal Expansion Project

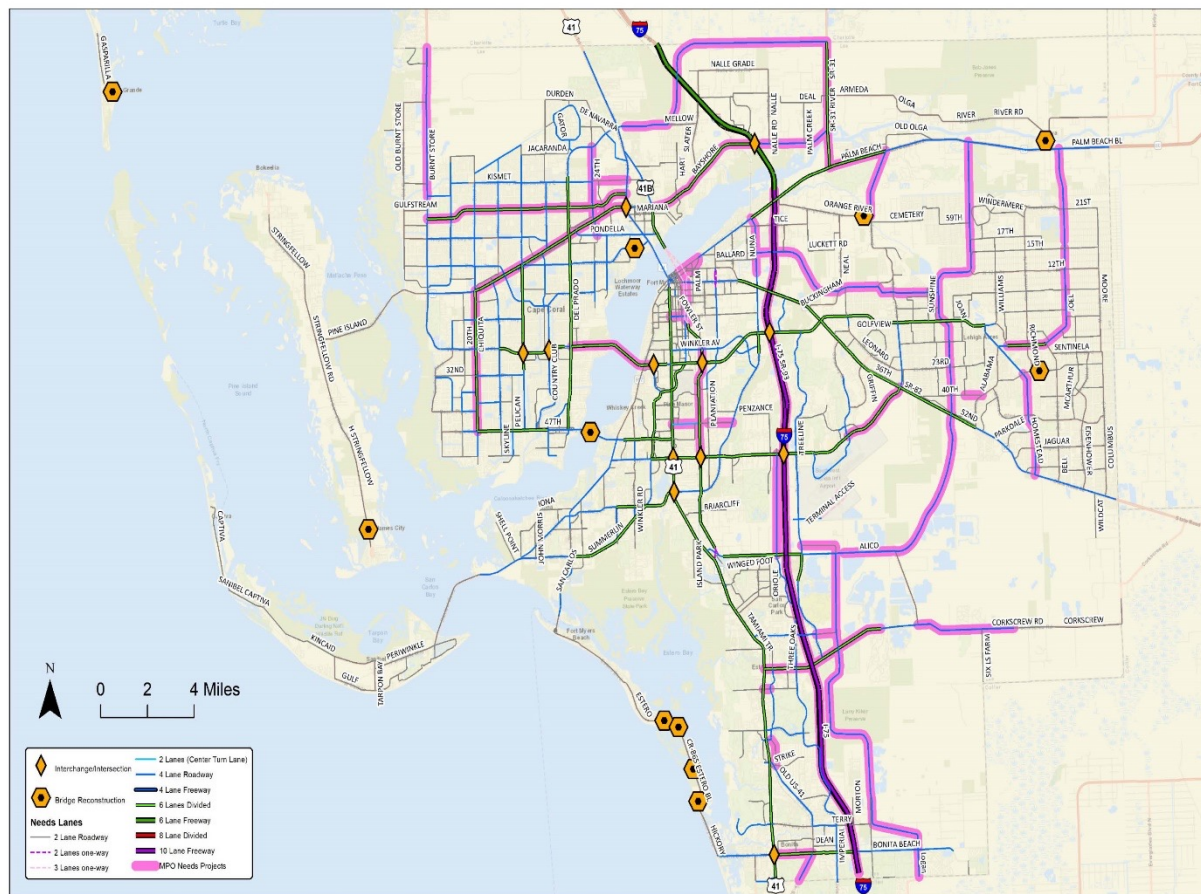




LeeTran Projects

- Rosa Parks Improvements adding bus bays and facility improvements - completion start later this year and completion in mid-June
- New South Transfer - Start in May 2022 and completion Summer 2023
- New Lehigh Acres Transfer Center - start Dec. 2022 and completion Winter 2023
- Bonita Mobility on Demand started in February

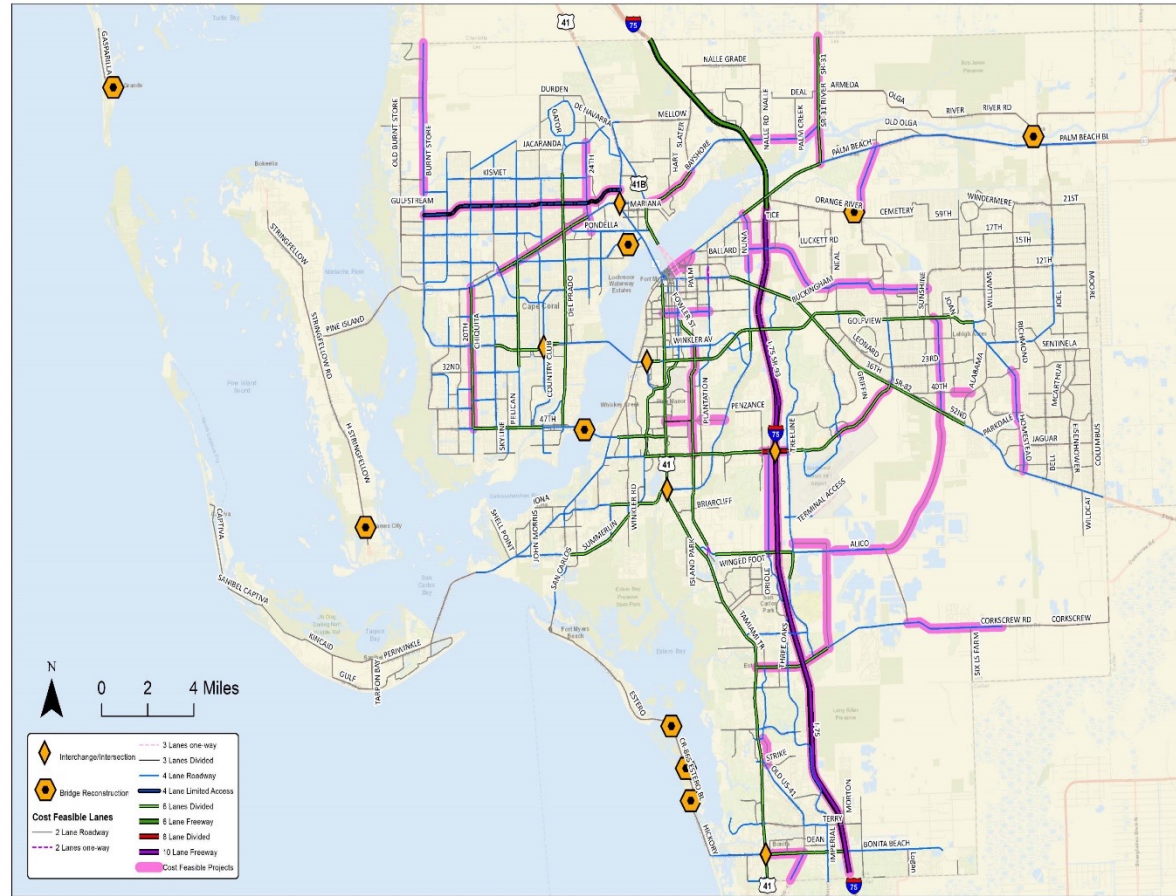
Map 4-3: Roadway Capacity Needs Plan, 2020–2045



2045 Transportation Plan



Map 5-2: 2045 Cost Feasible Roadway Projects



2045 Transportation Plan





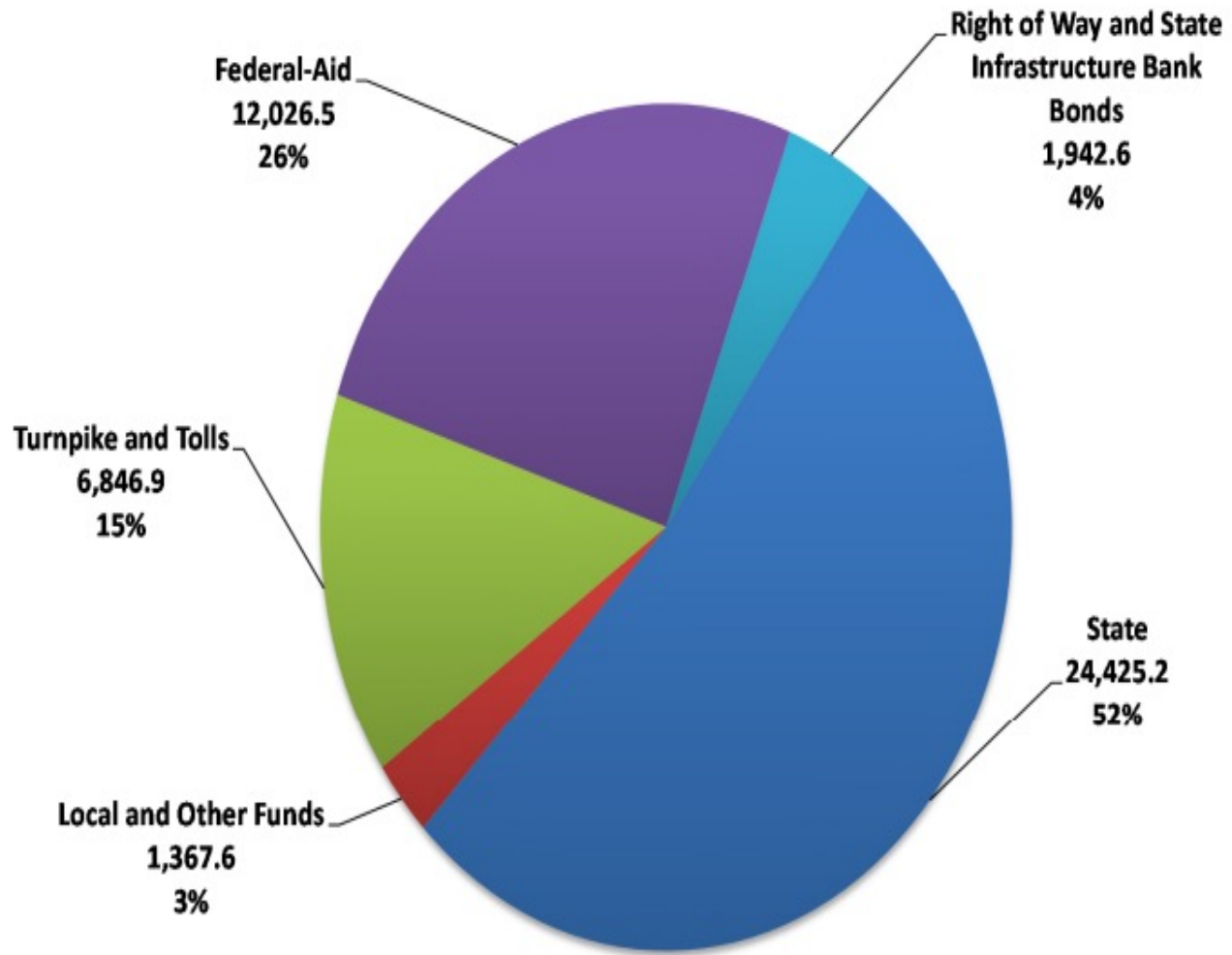
Transportation Funding and Project Development

e 5-1: Local, State and Federal Revenues for Capital Projects (Y

Funding Source	Total
State	\$ 888,200,000
Federal (Major Projects)	\$ 135,300,000
Federal (Bike/Ped, Transit & CMS)	\$ 125,000,000
Local	\$ 2,767,115,000
Transit (Local)	\$ 684,210,000
FDOT SIS Funding	\$ 1,626,055,000
Total	\$ 6,225,880,000

Revenue Projections included in the Long Range Plan

Funding Sources for Commitments (in millions)

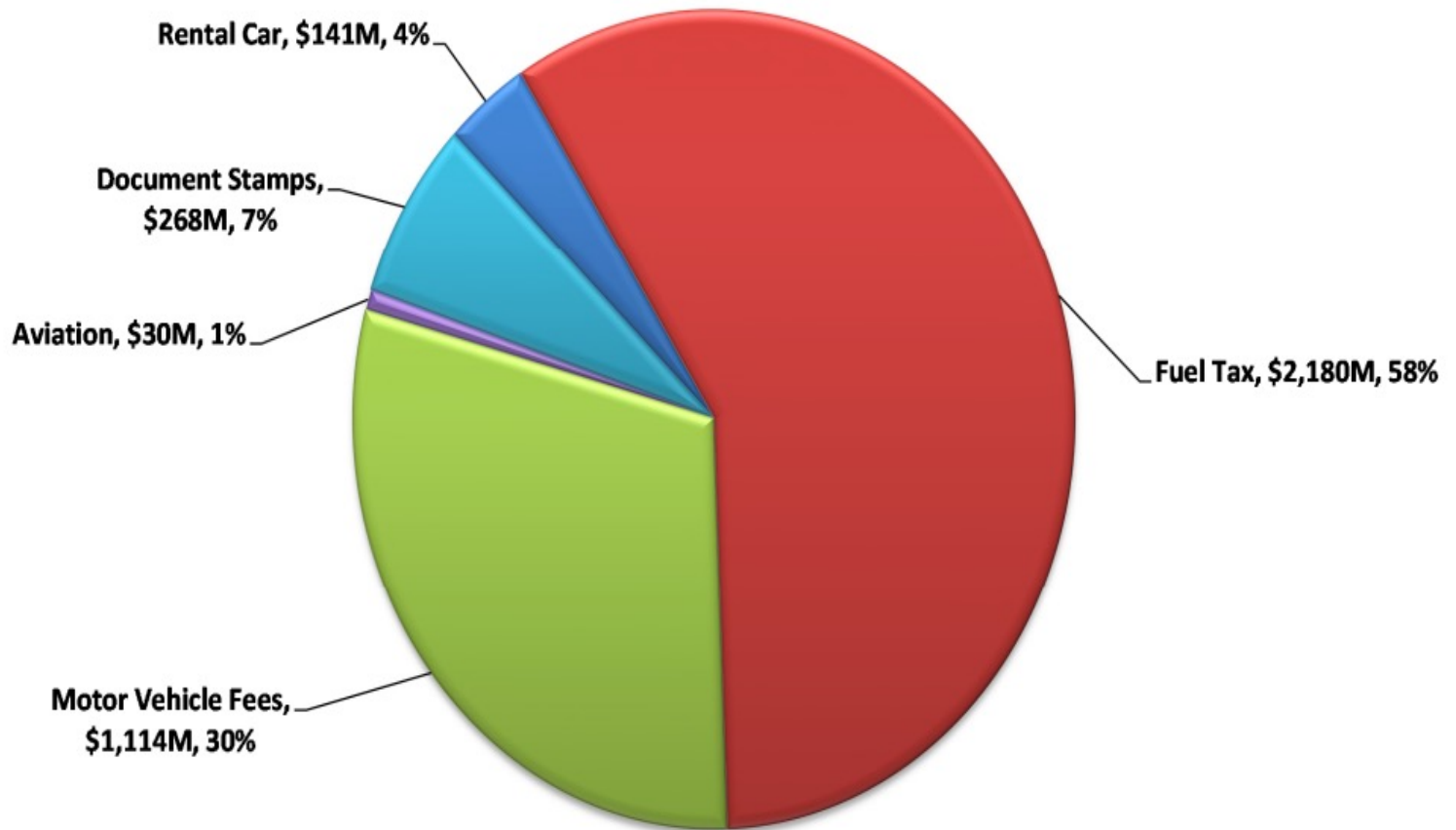


Total Adopted Five Year Work Program Commitments

FDOT Five Year Work Program Funding Sources

State Transportation Revenue

Fiscal Year 2015-16





Local
Funding
Sources

Gas Taxes

Impact Fees

Tolls

Growth Increment Funding

General Fund

Grants

2021 FEDERAL AND STATE FUNDED PRIORITIES
ADOPTED ON MAY 14, 2021

2021 Priority	2020 Priority	FM #	Project	From	To	Improvement Type	Length (miles)	Next Phase	PDC Estimate (in \$1,000)
1	1	4299601	Partial Funding for County Traffic Operations Center ¹						\$43.5
2	2	1957641	Multi-Modal Enhancement Box ¹						\$3,500
3	3		Blg Carlos Bridge Replacement			Bridge	0.4	CST	\$5,000
4			US 41 Caloosahatchee Bridge Pedestrian Infrastructure			Sidewalk	1.0	PE/CST	\$13,800
5	4	4443281	US 41 at Six Mile Cypress Parkway			Intersection	1.0	PE	\$2,000
6	5	4443214	US 41 at Bonita Beach Road			Bypass/Intersection	1.0	PE	\$1,110
7	6	4369281	Burnt Store Road	Van Buren Pkwy	Charlotte Co/1	2L to 4L	5.5	PE	\$8,320
8	7	4313344	SR 730 (Metro Pkwy)	S. of Colonial	Winkler Ave	Partial CFI	1.0	CST	\$37,700
9	8	4313342	SR 730 (Metro Pkwy)	S. of Daniels	N. of Daniels	Partial CFI	0.6	CST	\$20,600
10	9	4313343	SR 730 (Metro Pkwy)	N. of Daniels	S. of Colonial	4L to 6L	2.9	CST	\$28,200
11	10	4419421	SR 31	SR 80	SR 78	2L to 4L	1.4	PE	\$4,000
12	11	4449371	SR 78	I-75	SR 31	2L to 4L	3.3	PE	\$4,500
13	12	4353471	Old US 41	US 41	Bonita Beach Road	Add lanes/reconstruct	2.7	PE	\$1,770
14	13		US 41/SR 78 Displaced Intersection Improvement			Intersection	0.5	PD&E/PE	\$600
15	14	4126363	Countywide ATMS			Phase III Implementation		PE	\$1,200

Notes:

Project Development and Environmental Studies

Public Hearings

Final Study Reports and Environmental Document

Community Involvement/Awareness

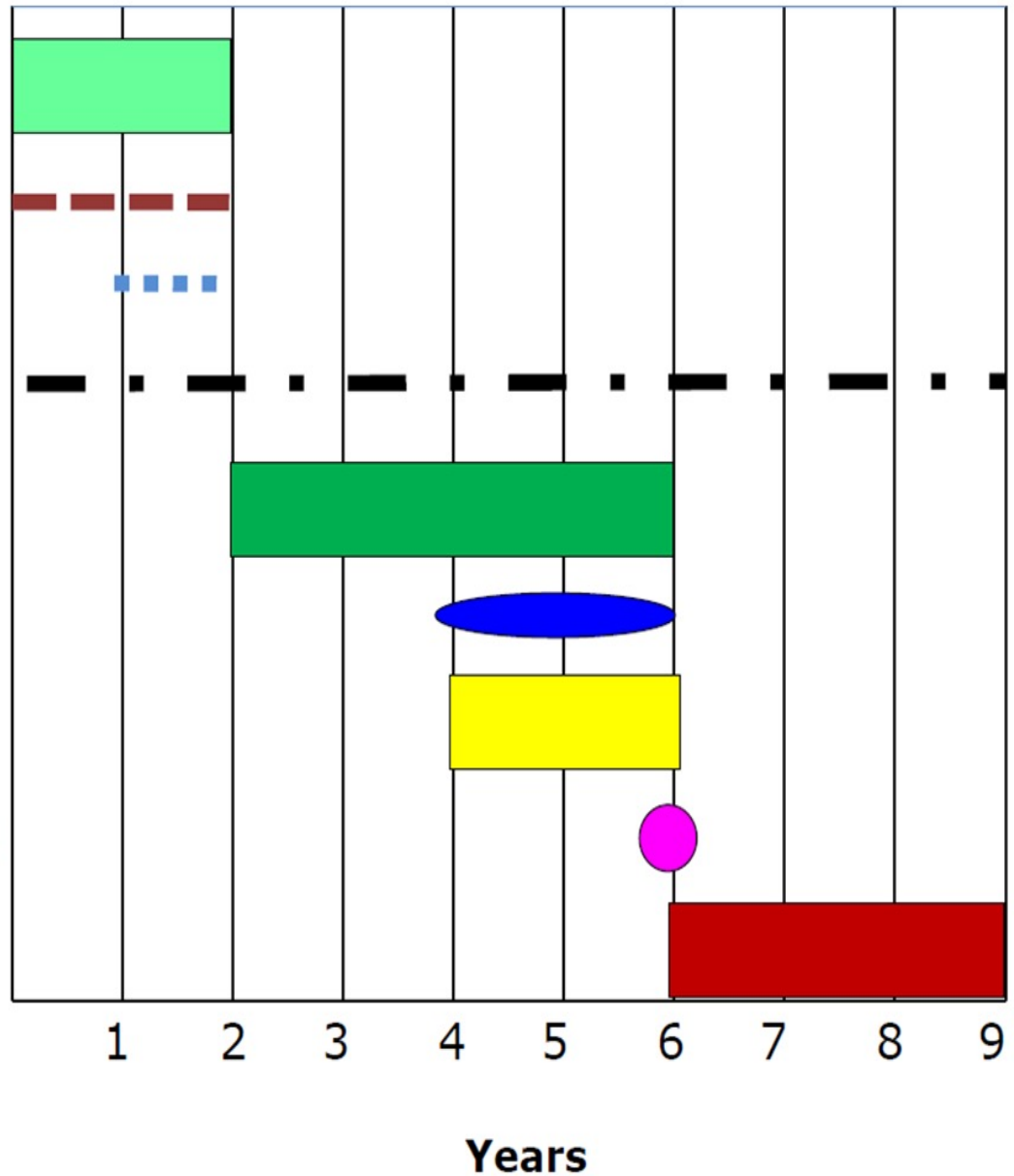
Develop Design

Obtain Permits

Appraise, Acquire and Clear ROW

Advertise and Let Contract

Construction



New Construction Divided LRE Typical Section (FY 2011 – FY 2022 to date)

Total Cost/mi



Challenges

- Project Cost Increases, labor and materials shortages
- Transportation funding impacted by EV and more fuel efficient vehicles
- Population and VMT increasing leading to increased congestion, particularly at major intersections where it is much harder to find acceptable solutions
- Increase in fatalities and serious injuries
- Regional impacts of affordable housing
- Increase in freight traffic from overall growth in online ordering



Questions or
Comments?

